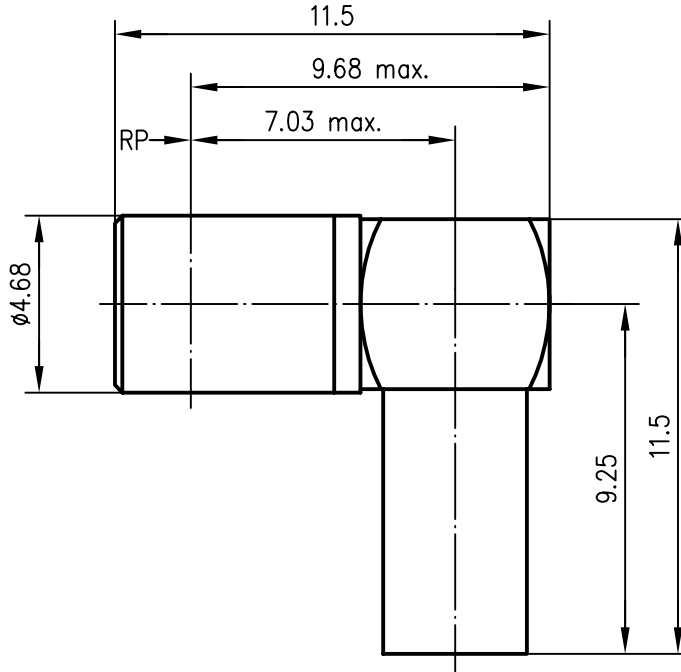

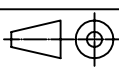


Anschlußmaße nach IEC 169-19 /
mating face according to IEC 169-19



Innenleiter / inner contact	CuBe2	Cu1Ni2Au1.27
Kontaktkorb / outer contact	CuBe2	Cu1Ni2Au0.8
andere Teile / other parts	CuZn39Pb3	Cu2Ni5Au0.2
Crimprohr / crimp ferrule	SF Cu w	Ni5Au0.2
Isolierung / insulator	PTFE	

Kabel / cable	G 3: KX 21A; RG-178B/U; RG-196A/U
Montage / mounting	C2513

				98	Datum/date	Name/name	Werkstoff/ material
				gez./drawn	19.05.	HR	
				gepr./appr.	22.05.98	HM	Oberfläche/ finish
				Norm/stand.			
				Maßstab/scale	Benennung/title		
				5:1	SSMB-Kabelwinkelbuchse SSMB Angle Jack		
				untol. Maße/ dim. without tolerances according to	Untert./doc.type	Zeichnungsnr./drawing no.	 Maße/dimensions: mm
				K	J01191A0041	Original: DIN A4	
Änd./rev. Index	Änderungsmittellung/ revision code	Datum/ date	Name/ name	Ersatz für/ replaces			